

Serving GIS Data to non-GIS Users

with CARIS OpenCite

Bernie Connors, P.Eng.

GIS Manager - bernie.connors@gnb.ca

New Brunswick Department of

Environment and Local Government

Outline

- Background: New Brunswick Department of Environment and Local Government (ELG)
- What is OpenCite and what can it do?
- OpenCite User Statistics
- Live OpenCite Demonstration

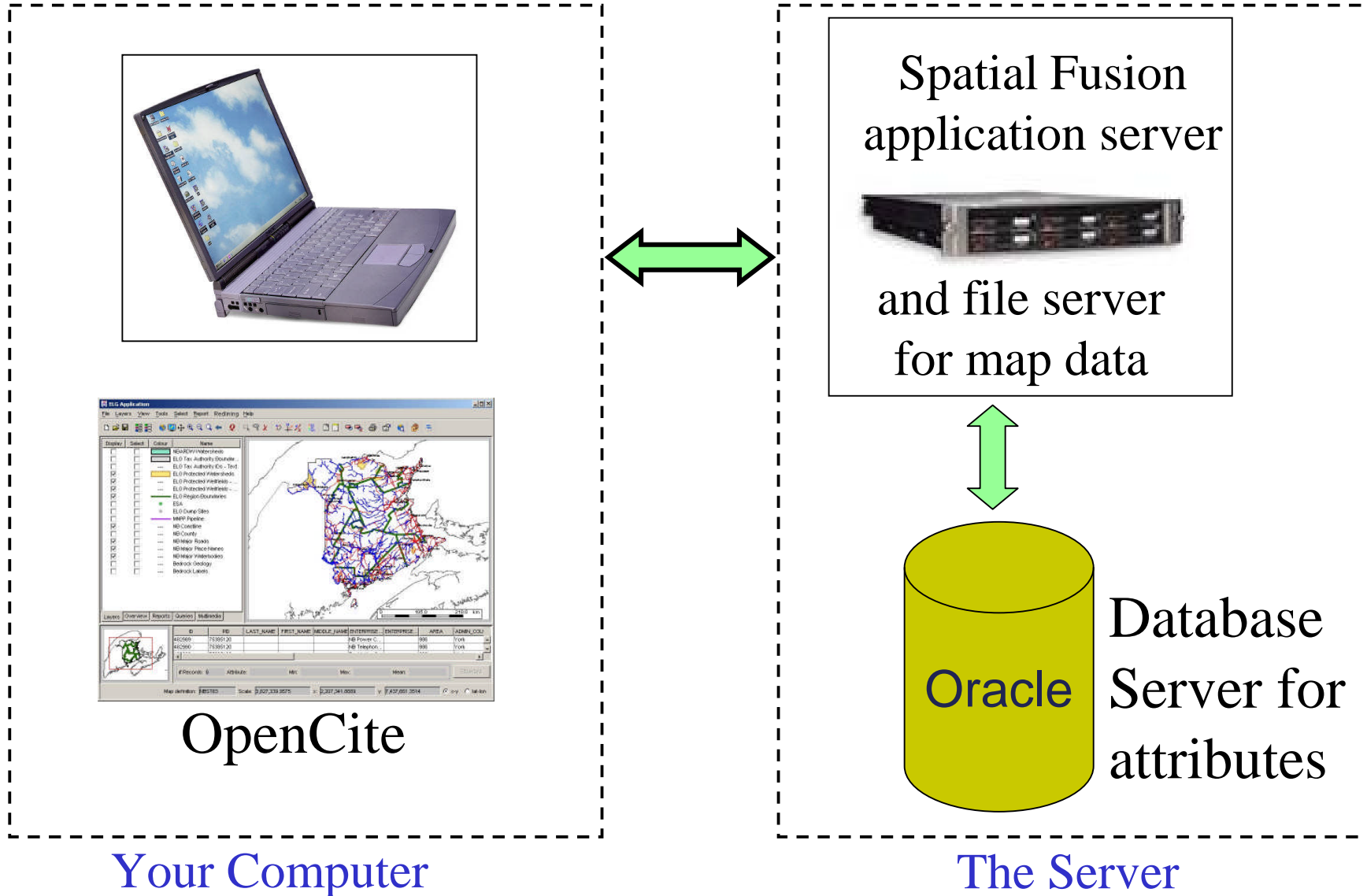
ELG Background

- ~350 employees
- 12 office locations across the Province
- GIS section has a staff of 2
- In 2003, before OpenCite was implemented, the GIS section produced ~1200 custom maps per year - about 6 custom maps per business day

What is OpenCite?

- A 'simplified' GIS program
- All of the complexity is hidden on the server
- Server is configured by a GIS administrator
- Users need very little training
- One GIS administrator can support hundreds or thousands of users
- OpenCite is a CARIS product

What is OpenCite?



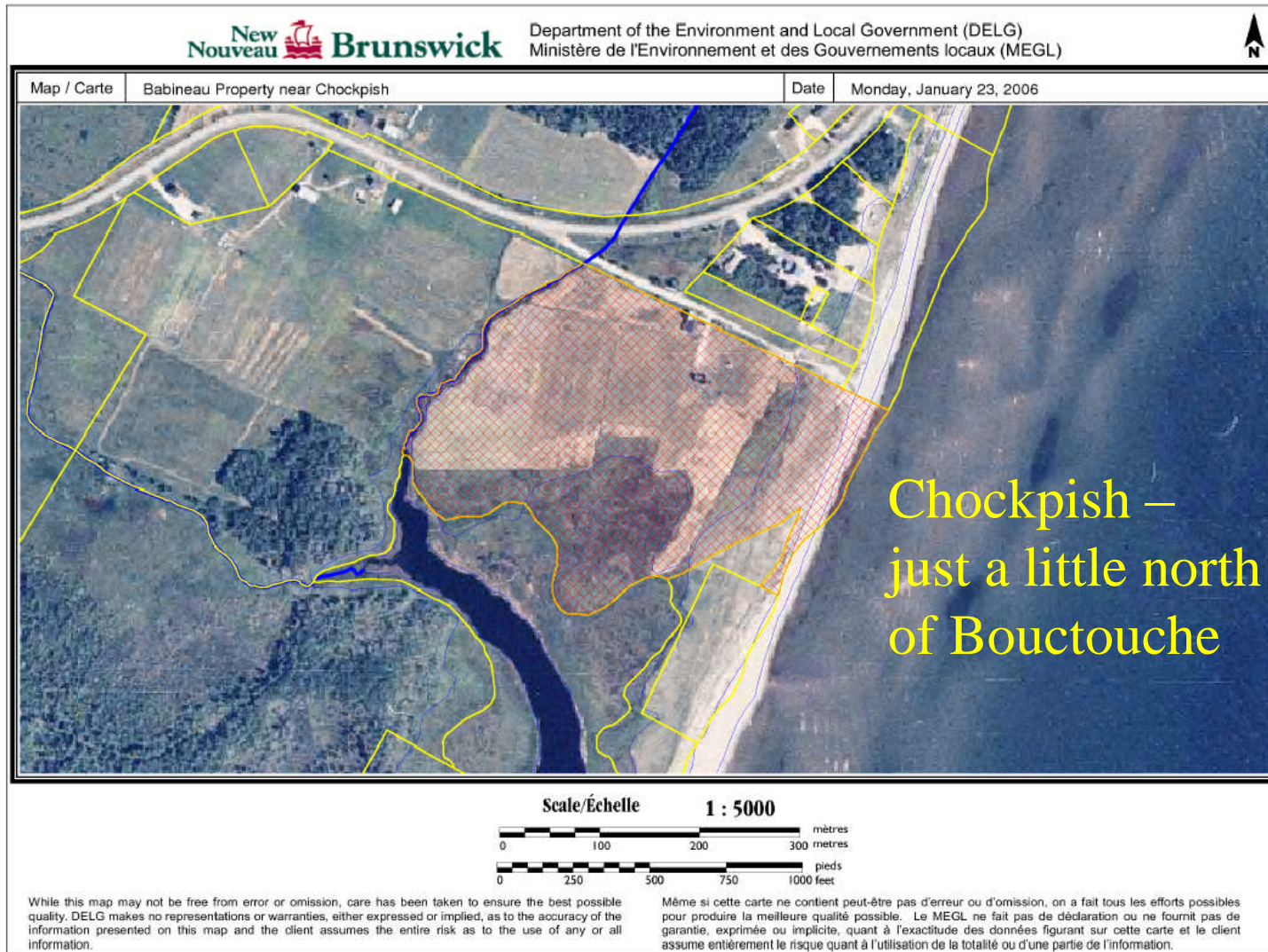
Who uses OpenCite?

- Approval Engineers
- Biologists
- Environment
Inspectors
- Enforcement Officers
- Planners
- Remediation
Engineers
- Local Service
Administrators
- Field Technicians
- Managers
- Policy Analysts
- Office Technicians
- Summer Students

What can OpenCite do?

- Print custom maps
 - Create hardcopy or PDF files
 - Includes scale bar, north arrow, title, and date

What can OpenCite do?



What can OpenCite do?

- View and query maps and databases
 - Who owns this coastal property?
 - Is there a coastal marsh on this property?
 - How far is this building from the shoreline?

What can OpenCite do?

The screenshot displays the ELG OpenCite 2.3 software interface. The main window shows a map of a coastal area with various colored overlays representing different data layers. A tooltip indicates a distance of 0.159833 km. The interface includes a menu bar (File, Layers, View, Tools, Select, Report, Redlining, Interoperable Data, Help), a toolbar with various icons, and a layer list on the left. Below the map, there are tabs for Layers, Overview, Reports, Queries, and Multimedia. A data table is visible at the bottom, showing columns for ID, PID, LAST_NAME, FIRST_NAME, MIDDLE_NAME, ENTERPRISE..., AREA, and ADMIN_COU... The table contains two rows of data.

ID	PID	LAST_NAME	FIRST_NAME	MIDDLE_NAME	ENTERPRISE...	ENTERPRISE...	AREA	ADMIN_COU...	F
310869	25255191						91300	Kent	0
310870	25255191						91300	Kent	0

Records: 2 Total: Min: Max: Mean:

Map definition: NBST83 Scale: 5,192.3585 x: 2,636,504.5142 y: 7,514,679.3454 x-y lat-lon

What can OpenCite do?

- Complex GIS analysis
 - How many dumps are within 2 km of the Bay of Fundy coastline?

What can OpenCite do?

The screenshot displays the ELG OpenCite 2.3 software interface. The main window shows a map of Saint John, NB, with various locations labeled: Moncton, Dieppe, Riverview, Sackville, Grand Bay, Quispamsis, Hampton, St. Stephen, St. George, Saint John, and Saint Andrews. A red buffer is applied to the map. Two dialog boxes are open: 'Buffer' and 'Analysis Dialog'. The 'Buffer' dialog shows options for 'User-defined point', 'User-defined line', 'User-defined polygon', and 'Selected Features'. The 'Analysis Dialog' shows 'Layer: ELG Dump Sites' and a 'Select...' button. Below the map is a table with columns: NBDOE Num..., Type, Municipality/..., Use, Operator, Land Owner, Date Opened, Date Contain..., Date Operati. The table contains two rows of data. Below the table is a summary bar with '# Records: 22', 'Total:', 'Min:', 'Max:', and 'Mean:'. At the bottom, the map definition is 'NBST83', the scale is '1,915,068.9132', and the coordinates are 'x: 2,413,376.8775' and 'y: 7,456,727.1183'.

ELG OpenCite 2.3

File Layers View Tools Select Report Redlining Interoperable Data Help

Symbolization

Display Select Colour Name

Buffer

Buffer Options

- User-defined point
- User-defined line
- User-defined polygon
- Selected Features

Buffer Parameters

Buffer Color:

Transparency: 50 %

Resolution: 200 m

Size(>resolution): 2000 m

Create Select... Clear

Analysis Dialog

Analysis Parameters

Layer: ELG Dump Sites

Select...

NBDOE Num...	Type	Municipality/...	Use	Operator	Land Owner	Date Opened	Date Contain...	Date Operati
69250510	M	Dorchester	M	Village of Do...	Village of Do...	1960/01/01		1974/12/31
69250601	P	Hillsborough	M	Lambert Ste...	Lestock G D...	1955/01/01		1975/12/01

Records: 22 Total: Min: Max: Mean:

Map definition: NBST83 Scale: 1,915,068.9132 x: 2,413,376.8775 y: 7,456,727.1183 x-y lat-lon

OpenCite User Stats

Weekly Count - OpenCite Map Production

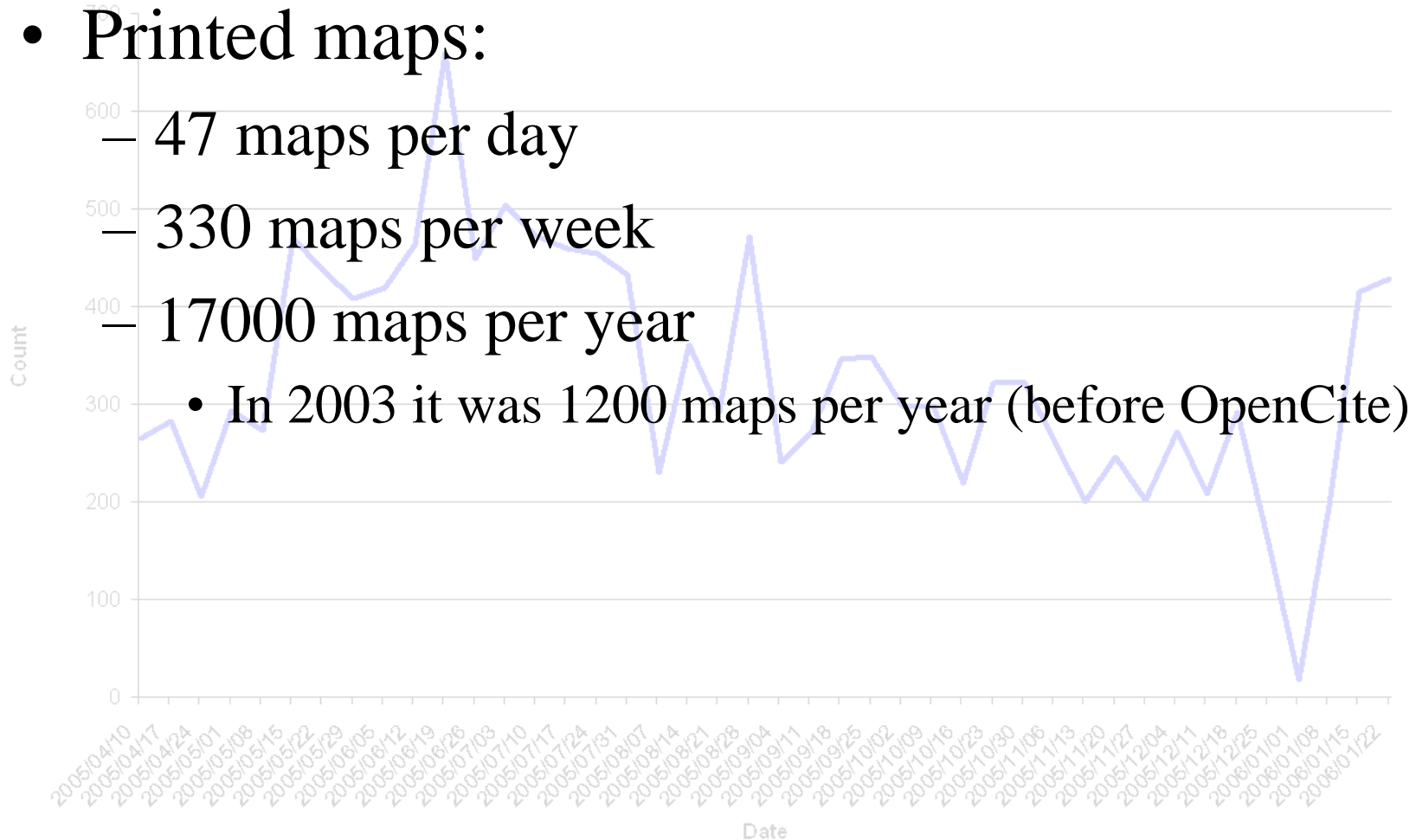
- Printed maps:

- 47 maps per day

- 330 maps per week

- 17000 maps per year

- In 2003 it was 1200 maps per year (before OpenCite)

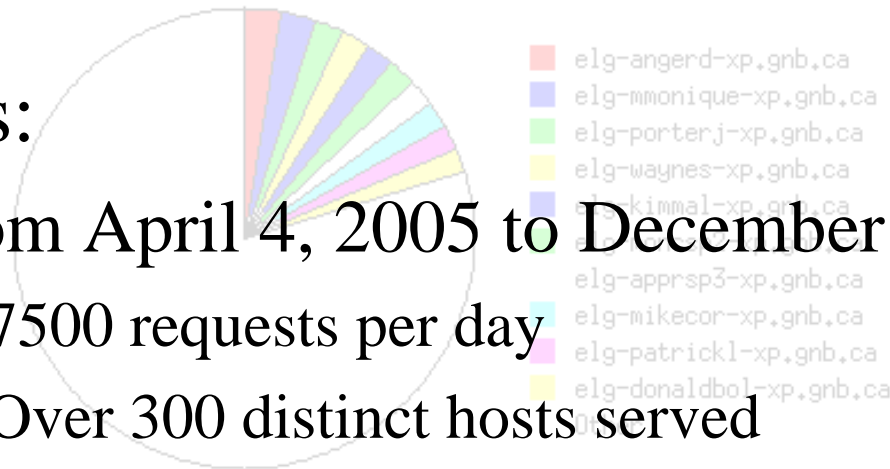


OpenCite User Stats

- Users:

- From April 4, 2005 to December 31, 2005:

- 7500 requests per day
- Over 300 distinct hosts served
- 40 gigabytes of data transferred



month	reqs	pages	
Apr 2005	149642	149642	_____
May 2005	267031	267031	_____
Jun 2005	291619	291607	_____
Jul 2005	269959	269959	_____
Aug 2005	272052	272052	_____
Sep 2005	210896	210896	_____
Oct 2005	211574	211574	_____
Nov 2005	214490	214490	_____
Dec 2005	131011	131011	_____